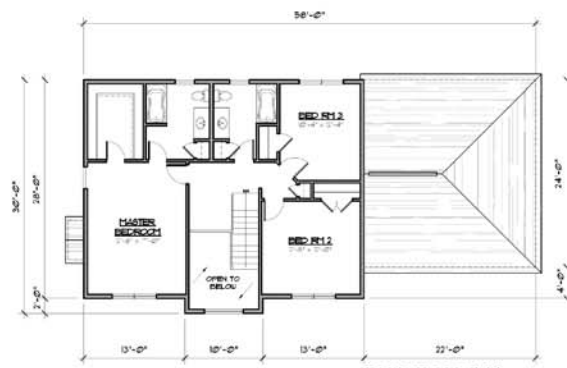


# THE DARTMOUTH

## WITH 2 CAR GARAGE



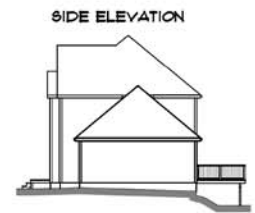
FIRST FLOOR PLAN



SECOND FLOOR PLAN



FRONT ELEVATION



SIDE ELEVATION



REAR ELEVATION



SIDE ELEVATION

BUILDING ELEVATIONS

NOTE: GRADE VARIES. ELEVATIONS SHOWN WITH REAR LOWER GRADES. REFER TO SITE PLANS FOR FULL GRADING CONDITIONS.

DRAWINGS PROVIDED BY:  
**Stonebridge Homes, Inc.**  
 32 Norfolk Ave  
 South Easton, MA 02375  
 508-230-2300

NOTE: THESE PLANS & ELEVATIONS ARE SCHEMATIC & ARE SUBJECT TO MINOR CHANGE. SOME OPTIONS/UPGRADES ARE SHOWN.

AREA BREAKDOWN		HOUSE FEATURES	
FIRST FLOOR	1,062 SF	BEDROOMS	3
SECOND FLOOR	1,028 SF	BATHROOMS	2½
TOTAL AREA	2,090 SF	GARAGE	2 CAR

STONE RIDGE  
**ESTATES**  
 ~ IN DIGHTON, MA ~